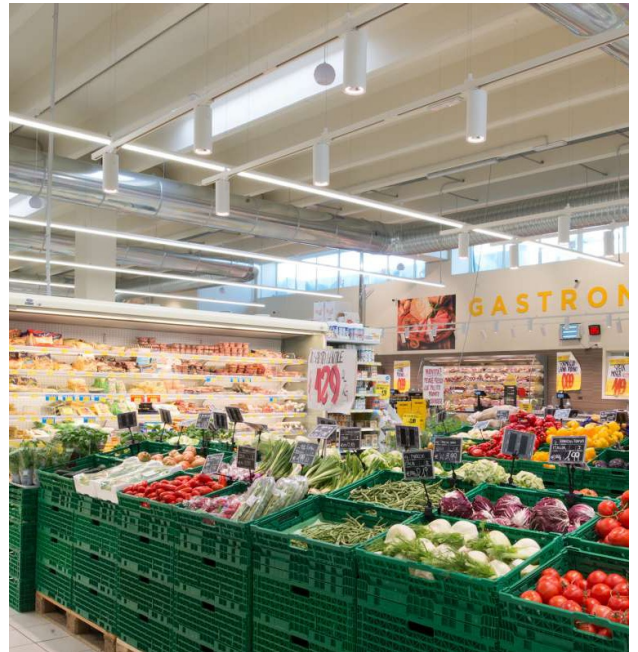


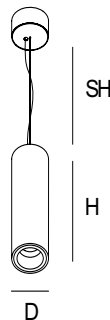
Pipes S S

PRO 2700 lm 22 W 840 FO 30° white

ARTICLE NO: 13053012601



Dimension



Dimension (mm): D: 100

H: 235

SH: 1500

Product description

Installation Suspended (S) **Optic** Metalized polycarbonate optic with lacquer finish, uniform distribution **Nominal Luminaire Luminous flux** 2650 lm

Light source luminous flux 3100 lm **Power** 21.9 W

Correlated colour temperature - CCT 4000 K **Colour Rendering Index - CRI** 80

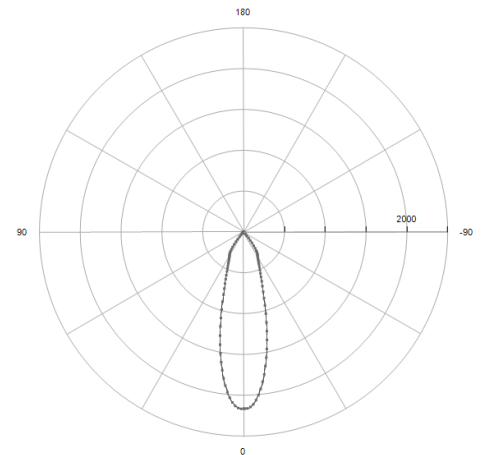
Chromaticity tolerance (initial MacAdam) 3 **Lumen maintenance factor** 50000h

L80 B10 at 35°C **Driver** LED driver with fixed output **Power supply** 230V 50Hz

IP Protection IP20 **IK Protection** N/A **Weight** 1,10 kg **EAN number** 3831121028102

Energy class A++

Photometry



Light output ratio

LOR	86
ULOR	0
DLOR	86
Total luminous flux	2666
Luminaire efficacy (LEF)	122

UGR values

X=4H, Y=8H	S = 0,25H
Radiant class	70/50/20
Transverse	20.3
Longitudinal	20.3

Classification

BZ	BZ 1
UTE	--
DIN	A60
CIE	99 100 100 100 86