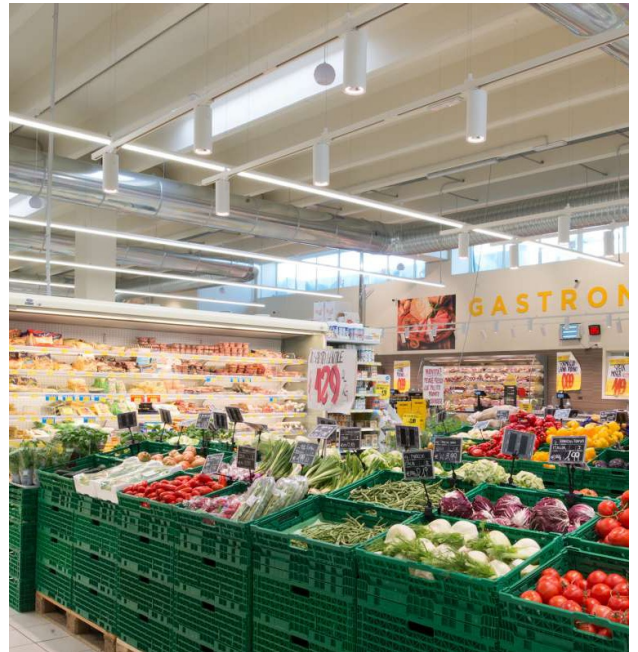


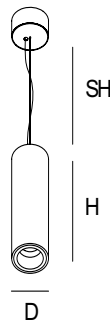
Pipes S S

PRO 1900 lm 22 W 930 FO 36° white

ARTICLE NO: 13053013701



Dimension



Dimension (mm): D: 100

H: 235

SH: 1500

Product description

Installation Suspended (S) **Optic** Metalized polycarbonate optic with lacquer finish, uniform distribution **Nominal Luminaire Luminous flux** 1900 lm

Light source luminous flux 2510 lm **Power** 21.9 W

Correlated colour temperature - CCT 3000 K **Colour Rendering Index - CRI** 90

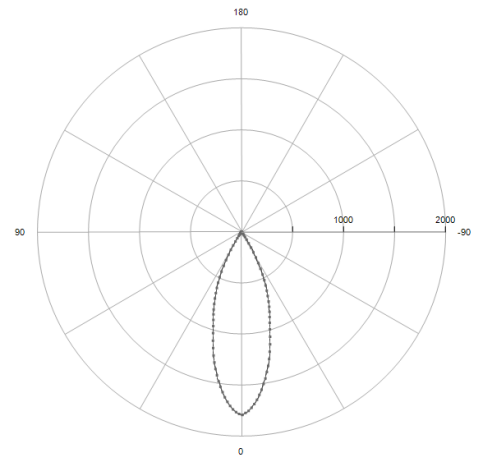
Chromaticity tolerance (initial MacAdam) 3 **Lumen maintenance factor** 50000h

L80 B10 at 35°C **Driver** LED driver with fixed output **Power supply** 230V 50Hz

IP Protection IP20 **IK Protection** N/A **Weight** 1,10 kg **EAN number** 3831121007763

Energy class A++

Photometry



Light output ratio

LOR	76
ULOR	0
DLOR	76
Total luminous flux	1908
Luminaire efficacy (LEF)	87

UGR values

X=4H, Y=8H	S = 0,25H
Radiant class	70/50/20
Transverse	14.7
Longitudinal	14.7

Classification

BZ	BZ 1
UTE	--
DIN	A60
CIE	99 99 100 100 76